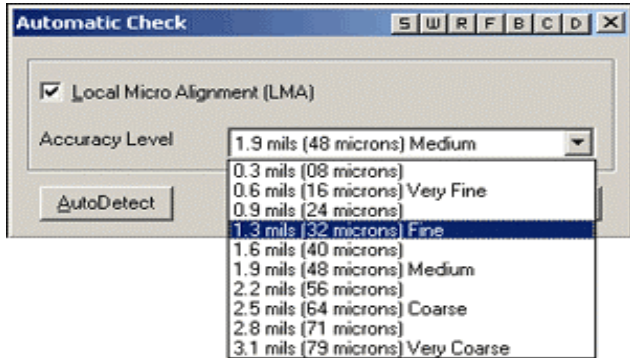
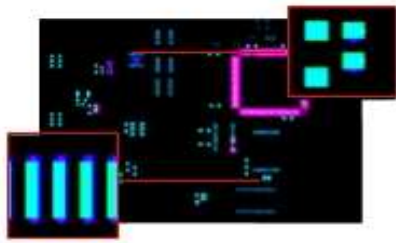


MaskINSPECTOR Lite

'Stencil & Screen Inspection'



Partners: Avytechno Indonesia,
Techlogic Thailand, Westek Malaysia,
Tritronics Philippines, Utama Australia



WHAT IS MaskINSPECTOR Lite?

MaskINSPECTOR Lite is a fully integrated, stand-alone measurement and inspection workstation for use after stencil and screen fabrication or other machined, etched, electroformed, or laser cut operations. MaskINSPECTOR Lite uses a PC Windows-based software package integrated with a high-resolution, calibrated, A3 size flatbed scanner. This combination allows inspection of both stencils and screens for accuracy and the ability to inspect 100% for absence/presence and correct size of apertures.

AUTOMATIC FEATURES

Tired of using slow manual measurement and inspection methods? MaskINSPECTOR Lite offers various functions that quickly and automatically verify data:

- Absence/Presence of Apertures
- Confirm Proper Aperture Shape and Size
- Compare Stencil/Screen vs. Gerber
- Compare Stencil/Screen vs. Stencil/Screen
- Compare Stencil/Screen vs. PCB
- Confirm Proper Aperture Position
- Automatic Inspection Accuracy Level Detection

VERIFICATION

Worried about the quality of the finished stencils, screens or Gerber files? Use MaskINSPECTOR Lite's "check functions" to verify the accuracy of the data. The new LMA option allows for checking apertures as small as 0.002" diameter (0.050 mm).

UPGRADEABLE

MaskINSPECTOR Lite can be easily upgraded to full MaskINSPECTOR with Gerber generation capabilities.



WHY USE MaskINSPECTOR Lite?

- 100% automatic inspection of screen/stencil for absence/presence and size of apertures.
- Detect aperture size error down to 0.0005" (0.0125mm) at 3200 dpi.
- Compare new Stencils and Screens against Gerber image for errors.
- Verify aperture sizes to 0.0005" and aperture absence/presence as small as 0.002" (0.050mm).

TECHNICAL SPECIFICATIONS*

Scanner:

High-Resolution Color Flatbed Scanner, Size A3:
(400/1000/2000/3200*/4000* dpi)
Calibrated Accuracy: $\pm 0.0015"$ (± 0.0381 mm)
A3-Scanning Bed Area: 11.7" x 16.5" (297mm x 419mm)
Maximum Work Area: 32.0" x 32.0" (813mm x 813mm)

*reduced Scanning area for 3200 & 4000 dpi.

Computer Requirements*:

Pentium III (1GHz) Personal Computer
60 GB HD, 512 MB RAM
CD-ROM (CD-RW for archive purposes)
Monitor (17" or larger)

Printer

Windows 98SE/Me/2000/XP
2 available USB ports

*Recommended customer supplied minimum PC requirements.

Computer Requirements:

Precision Glass Calibration Grid
Software Protection Key
Scanning Accessory Package
Custom Desk (Optional)
Custom Transmissive Lighting Package

Specifications subject to change without notice



AVI PRECISION ENGINEERING PTE LTD

1, KALLANG SECTOR #04-03, SINGAPORE 349276. TEL: 65 67483866 FAX: 65 67484810

Email: avipre@avipre.com.sg

Website: <http://www.avipre.com>

Company Reg No: 199300584 M

Skype: avipre